

Free eNewsletter

Enter your E-mail



Shop By Type

- Cable Assemblies
- Adapters
- Connectors
- Rack Panels
- Bulk Cable
- Tools
- Switch Boxes
- Network Cards
- Hubs & Switches
- Converters & Transceivers
- KVM Switches
- Antennas

- Overstock/Sale Items
- Top 10 Products

Shop By Category

- IEEE-488 GPIB
- Coaxial
- Monitor, Video
- Fiber Optic
- D-Subminiature
- Modular
- USB, DIN, Firewire, SCSI, and Others
- Wireless Infrastructure
- Weatherproof Enclosures
- Networking and Other Equipment

Product Wizards

- Cable Assemblies
- Adapters
- Connectors
- Rack Panels
- Tools
- Switch Boxes
- Network Cards
- Hubs or Switches
- Ethernet Converters
- KVM Switches

Technical Resources

- FAQs
- Connector Chart
- Glossary
- Tutorials
- Tips and Videos
- White Papers
- Catalog Downloads
- eNewsletter Archive

You Are Here: [Home](#) > [Modular](#) > [Adapters, Couplers, Splitters](#) > [Modular Couplers](#) > [ECF504- C, SC](#) > **ECF504-SC3**

Category 3 Shielded RJ45 (8x8) Deluxe Panel Coupler Kit

L-com's premium line of Modular Couplers combines innovative design with an affordable price. With a solid die-cast metal mounting frame, these unique coupler kits allow panel mounting in virtually any panel thickness. Designed to work with EIA/TIA 568A and B wiring, these couplers offer a reliable method to pass high-speed data communication through a chassis or rack panel. Couplers listed include Category 3, 5E and 6 performance ratings in both Shielded and Unshielded versions. Kits include a snap-in coupler, mounting frame and 4-40 machine screws.



Features for this Modular product

- EIA/TIA 568A/B compliant insures compatibility and reliability in your application
- Category 3, 5E and 6 performance ratings facilitate high-speed data communication
- RJ45 Female connectors and straight through wiring for network system compatibility
- Fully stamped shielding (where applicable) offers isolation from EMI/RFI
- Flange kit includes a snap-in coupler, mounting frame and 4-40 machine screws

Details for this Modular product

L-com Item #	ECF504-SC3
Manufacturer	L-com
ASIN # (More)	B000AAJDJO
UPC # (More)	822335022461
RoHS Status	RoHS Compliant (More)

- [Tip](#)
- [Video Clip](#)
- [Catalog Page](#)
- [Catalog Page](#)
- [2D Drawing \(.pdf\)](#)
- [3D CAD Model \(.step\)](#)

L-com Exclusive



ECF504-C3 ECF504-SC3



ECF504-C5 ECF504-SC5E



ECF504-C6 ECF504-SC6

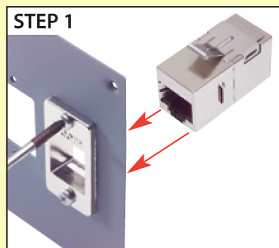
Item #	Description	1-9	10-24	25-99	100-249	250-499
--------	-------------	-----	-------	-------	---------	---------

Premium Panel Mounted Modular Coupler Kits - Category 3, 5E and 6 - Shielded and Unshielded

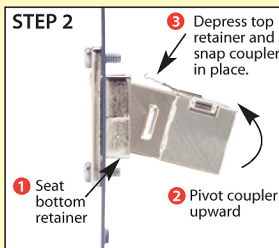
These unique coupler kits allow panel mounting in virtually any panel thickness. A solid die-cast metal mounting frame provides secure mounting and reliable coupling. Kits include a snap-in coupler, mounting frame and two 4-40 machine screws.

- ECF504-C3 Category 3 Unshielded RJ45 (8x8) Deluxe Panel Coupler Kit
- ECF504-SC3 Category 3 Shielded RJ45 (8x8) Deluxe Panel Coupler Kit
- ECF504-C5 Category 5E Unshielded RJ45 (8x8) Deluxe Panel Coupler Kit
- ECF504-SC5E Category 5E Shielded RJ45 (8x8) Deluxe Panel Coupler Kit
- ECF504-C6 Category 6 Unshielded RJ45 (8x8) Deluxe Panel Coupler Kit
- ECF504-SC6 Category 6 Shielded RJ45 (8x8) Deluxe Panel Coupler Kit

Tip How to install a premium ECF Kit



Secure frame in specified opening with supplied hardware and align coupler in proper orientation to the opening.



Seat bottom retainer and pivot coupler upward while depressing upper retainer.



Coupler fully seated.

See The Video

www.L-com.com/Videos/A09

Telecom and Network Grade Patch Panels

These 19" panels feature L-com's exclusive ECF series flange mounted feed-thru couplers. These couplers are available in Category 3, Category 5E or Category 6 in either shielded or non-shielded styles. The ECF series couplers are unique in that they use 2 4-40 screws to firmly attach the connector flange to the rack panel. The panels have a powder coat black finish for durability and each port is numbered to simplify cable organization and tracking. Both 16 and 32 port versions are available.

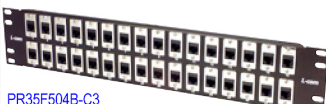
- PR175F504B-C3 1.75" Panel with 16 Category 3 Couplers
- PR175F504B-SC3 1.75" Panel with 16 Category 3 Shielded Couplers
- PR35F504B-C3 3.50" Panel with 32 Category 3 Couplers
- PR35F504B-SC3 3.50" Panel with 32 Category 3 Shielded Couplers
- PR175F504B-C5 1.75" Panel with 16 Category 5E Couplers
- PR175F504B-SC5 1.75" Panel with 16 Category 5E Shielded Couplers
- PR35F504B-C5 3.50" Panel with 32 Category 5E Couplers
- PR35F504B-SC5 3.50" Panel with 32 Category 5E Shielded Couplers
- PR175F504B-C6 1.75" Panel with 16 Category 6 Couplers
- PR175F504B-SC6 1.75" Panel with 16 Category 6 Shielded Couplers
- PR35F504B-C6 3.50" Panel with 32 Category 6 Couplers
- PR35F504B-SC6 3.50" Panel with 32 Category 6 Shielded Couplers
- PR175F504B 1.75" Panel, 16 ECF Style Cutouts, Black
- PR35F504B 3.50" Panel, 32 ECF Style Cutouts, Black



PR175F504B-C3
PR175F504B-C5
PR175F504B-C6



PR175F504B-SC3
PR175F504B-SC5
PR175F504B-SC6



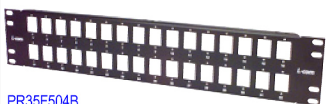
PR35F504B-C3
PR35F504B-C5
PR35F504B-C6



PR35F504B-SC3
PR35F504B-SC5
PR35F504B-SC6



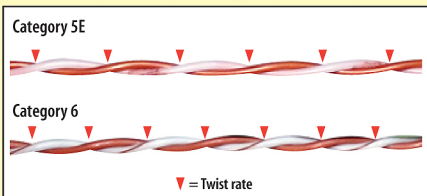
PR175F504B



PR35F504B

Tip What is the difference between Category 5E and Category 6 100 Ohm UTP?

The new Category 6 Standard adopted in mid 2002 extended key parameters over Category 5E specifications. The additional headroom is intended to provide quality transmission at higher data rates required by emerging applications. As the chart indicates, the most prominent difference is the frequency at which the key parameters are measured. The jump from 100 to 250MHz places a great deal of emphasis on component quality as well as installation techniques. This improvement is commonly noticed by the increased pair twisting and staggering of twisted pairs.



	Category 5E	Category 6
Frequency	100 MHz	250 MHz
Attenuation	22db	19.8db/100M @ 100 MHz 32.8db/100M @ 250 MHz
Return Loss	19db	19db @ 100 MHz 15.6db @ 250 MHz
Delay Skew	45ns	45ns
Near End Crosstalk (NEXT)	35.3db	44.3db @ 100 MHz 38.3db @ 250 MHz
Power Sum Near End Crosstalk (PS-NEXT)	32.3db	42.3db @ 100 MHz 36.3db @ 250 MHz
Equal Level Far End Crosstalk (ELFEXT)	23.8db	27.8db @ 100 MHz 19.8db @ 250 MHz
Power Sum Equal Level Far end Crosstalk (PS-ELFEXT)	20.8db	24.8db @ 100 MHz 16.8db @ 250 MHz